



# ECEGON

**A new era of technology,  
quality and reliability.**

The evolution of animal health



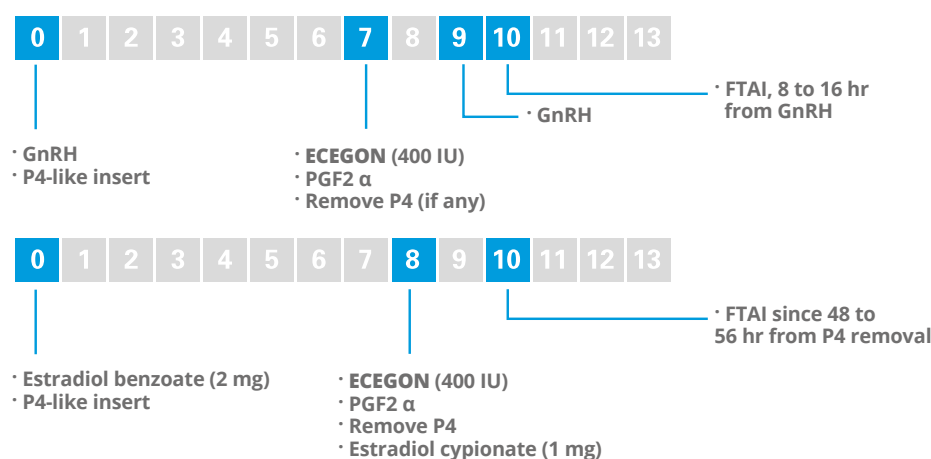


**ECEGON** is an Equine Chorionic Gonadotropin (eCG-PMSG) hormone. Highly purified, with an optimal FSH/LH ratio and stable potency which guarantee uniform results

- eCG-PMSG 5.000 I.U. as a freeze-dried powder (lyophilized)
- 25 mL of sodium chloride solution 0.9% (diluent)

## Most recommended Synchronizations protocols

Large ruminant's estrus synchronization for FTAI



• Times for different protocols may vary. Please follow your veterinarian's recommendation.

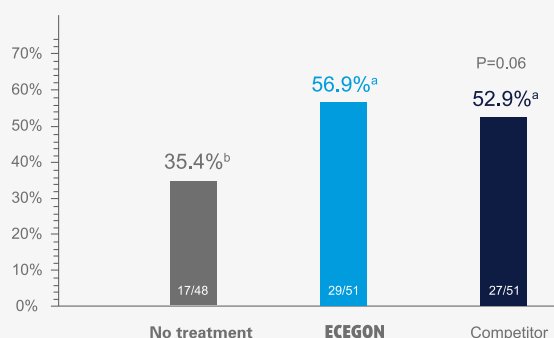
**Accurate Synchronization - Higher pregnancy rates**

## Proven results from the field

Effect of **ECEGON** on the follicle growth and pregnancy rate in primiparous cows with suckling calves.

**Long-acting stimulation to increase fertility and enhance reproductive performance of the herd.**

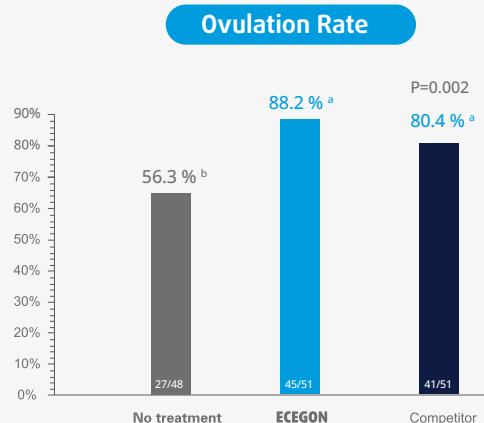
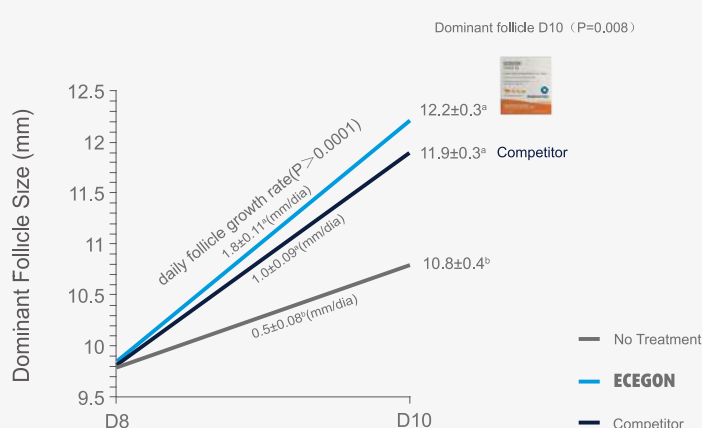
**Pregnancy Rate**



According to scientific reports published during the Annual Meeting of the Brazilian Embryo Technology Society (SBTE) 2018

## Proven results from the field

Effect of **ECEGON** on the follicle growth and pregnancy rate in primiparous cows with suckling calves.



According to scientific reports published during the Annual Meeting of the Brazilian Embryo Technology Society (SBTE) 2018



- ✓ **Larger follicles with lower pregnancy losses**
- ✓ **Higher pregnancy rate**
- ✓ **More calves to wean**

## Reliable Results Guaranteed by Standardized Process

Whole process control, batch after batch.  
Continuous research, development and innovation.

Self-supply of raw material

Highly purified PMSG by innovative technology

Formulation & Lyophilization



**ECEGON** ready to enhance your productivity



### ECEGON

**+12 years**  
Leading LATAM markets

**Excellent reception**  
by farmers and KOL

**Used as reference product**  
in several scientific publications

The evolution of animal health



[info.asia@biogenesisbago.com](mailto:info.asia@biogenesisbago.com)