



FLOK®

**Highly Effective External
and Internal Antiparasitic
for Cattle and Sheep**

The evolution of animal health

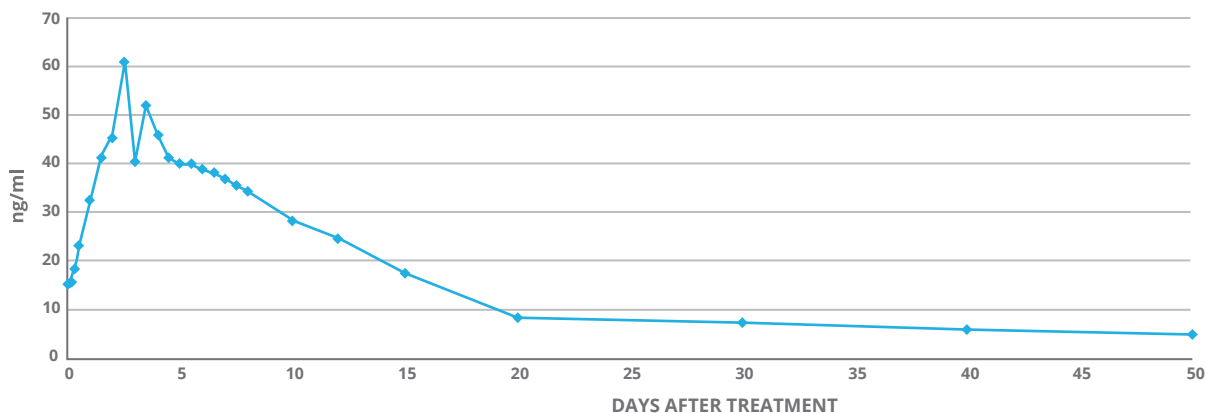




Highly Effective External and Internal Antiparasitic For Cattle and Sheep

FLOK is a ready-to-use solution for injection of doramectin 1.1%. When administered subcutaneously at the indicated dose in cattle and sheep, it is highly effective for the control, prevention and treatment of both, internal and external parasites.

Pharmacokinetic of FLOK 1.1% in cattle showing the “double peak concentration” thanks to MABS Technology.



Graphic 1. Mean doramectin's plasma concentrations (ng/ml) after subcutaneous (SC) injection of FLOK 1.1% in bovines (n=10)

FLOK®



Modifier of Absorption System

The novel formulation of FLOK with MABS Technology allows to reach a rapid and high concentration of doramectin in the blood, followed by a sustained permanence in the organism, offering immediate anti parasiticial action and for longer time.

Dose according to body weight (Cattle)

Body wight (Kg.)	50	100	150	200	250
Dose (mL.)	1	2	3	4	5
Body wight (Kg.)	300	350	400	450	500
Dose (mL.)	6	7	8	9	10

Dose according to body weight (Sheep)

Animals up to 25 kg	0.5 mL
Animals between 25 and 50 kg	1 mL
Animals between 50 and 75 kg	1.5 mL
Animals > 75 kg	2 mL

Dose-volume higher than 10 mL, split it into two different injection sites.

Do not use during lactation in animals intended to produce milk for human consumption.

The evolution of animal health



**Biogénesis
Bagó**



info.asia@biogenesisbago.com